



# PowerTerm® Pro Series

## QUICK REFERENCE GUIDE (for Windows® edition)

### CONTENTS

**1. PowerTerm Requirements**  
Minimum system requirements.

**2. Installation**  
How to install PowerTerm Pro.

**3. Connection Requirements**  
What you must know before you make a connection.

**4. Quick Start**  
The 'quick' way to make a connection.

**5. PowerTerm Pro at a Glance**  
A look at the PowerTerm Pro window.

**6. Key Customization**  
Programming Keyboard, Power Pad, and Soft Keys.

**7. Toolbar Customization**  
Adjust the toolbar's appearance.

**8. Print Screen & Auto Print**  
Brief description and how to use.

**9. Slave Printing**  
Description and supported emulations with their corresponding sequences.

**10. Advanced Printing**  
5250 and non-5250 parameter description and setup.

**11. Saving and Using Session Settings**  
How to save your settings and start a session with your selected settings.

**12. Sending Screen Captures by Email**

**13. Transferring Files**

**14. Accessing External Applications**  
How to access the Web, Office applications, etc. from within PowerTerm Pro.

**15. Script Editor Toolbar**

**16. Providing Support**

### 1. REQUIREMENTS

- Windows 98 or higher
- Connection to a host computer
- 14 MB free space on your hard disk

### 2. INSTALLATION

1. Insert the CD and locate the CD-ROM drive.
2. Select **Install** and follow the instructions.

*You can also start installation by downloading the files from the Ericom Software evaluation page at [www.ericom.com/ptsoftware.asp](http://www.ericom.com/ptsoftware.asp), and selecting PowerTerm Pro edition*

ONLINE HELP AVAILABLE

1

[WWW.ERICOM.COM](http://WWW.ERICOM.COM)

### 3. CONNECTION REQUIREMENTS

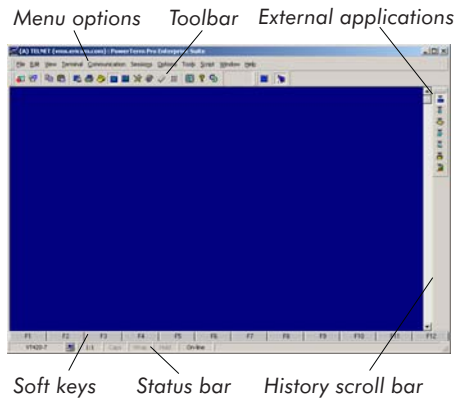
In order to make a connection, you must know the following:

1. Type of emulation needed in order to connect to the host
2. Method of communication:
  - TCP/IP (make sure it's installed on your PC)
  - Modem/direct serial (must have a modem installed or a direct connection to the host)
  - Gateway (must have appropriate client software installed)
  - Other

### 4. QUICK START

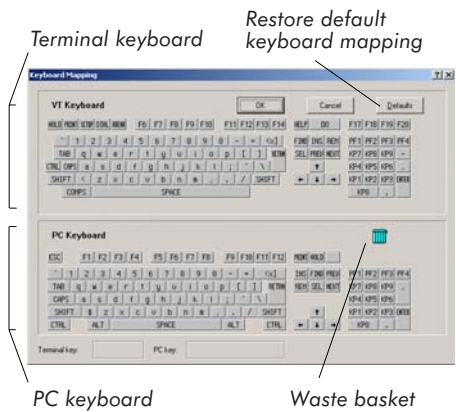
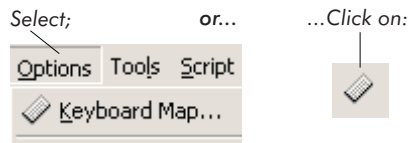
1. Start PowerTerm Pro from the Ericom PowerTerm program group.
2. Click **Communication | Connect**.
3. Set the **Terminal Type** (emulation) in the **Connect** dialog.
4. Set the **Terminal ID**, if necessary.
5. Select the appropriate **Session Type**.
6. Fill in the appropriate parameter fields.
7. Click **Connect**.

### 5. POWERTERM PRO AT A GLANCE



### 6. KEY CUSTOMIZATION

#### Keymapping



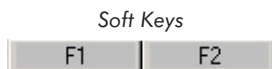
### Two ways to map keys:

1. Drag and drop – With your mouse, left-click the key to be moved, and drag it to the new desired location.
2. Right-click **Enter Script Command** on a PC key to program a 'complex' keymapping.

### Examples:

- send <escape>23~
- send 'abc123<cr>'
- send \x7f (mapping hex)
- key f1 do {send <escape>23~}
- key numpad1 do {send 'abc123<cr>'}
- key delete do {send \x7f}

### Soft Keys / Power Pad Mapping

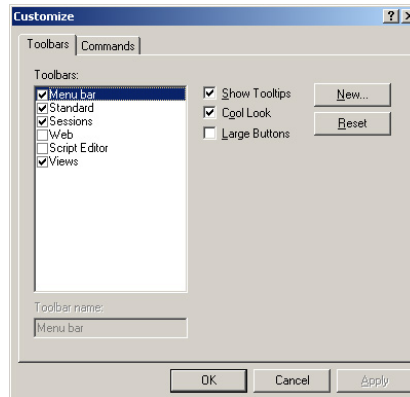


1. Right-click the **Soft Key** or **Power Pad** button that you want to program.
2. Enter **Button Description** (the new button name and the **Script Command** to be run by this key/button and click **OK**.

## 7. TOOLBAR CUSTOMIZATION

### To customize PowerTerm Pro's standard toolbars:

1. Select **Options | Customize**. The **Customize** dialog is displayed:



2. Select or clear toolbar options as desired from the Toolbars list.
3. Select or clear any of the other features.
4. Click **OK**.

**Note:** Click **Reset** if you choose to use the default toolbar settings.

**Show Tooltips:** Provides tooltip when the cursor is pointing to a toolbar button.

**Cool Look:** Gives the toolbar a non-button look.

**Large Buttons:** Enlarges the buttons.

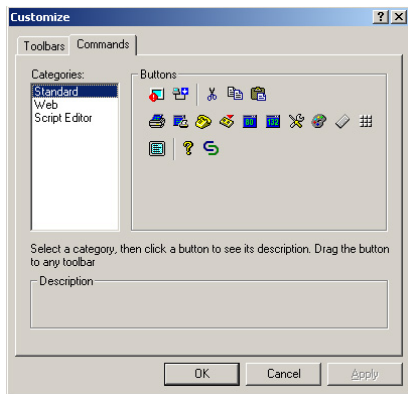
### To add a new customized PowerTerm Pro toolbar:

1. Select **Options | Customize**. The **Customize** dialog is displayed.
2. Click **New**. The **new Toolbar** dialog is displayed.
3. Type the name of the new toolbar and click **OK**.

**Note:** Click **Delete** if you choose to delete a selected toolbar that you added.

### To customize a particular PowerTerm Pro toolbar:

1. Select **Options | Customize**. The **Customize** dialog is displayed.
2. Select the **Commands** tab. The **Commands** properties page is displayed:



3. Select the desired category from the **Categories** list. The associated members (represented by icons) of the chosen category appear under the **Buttons** group.

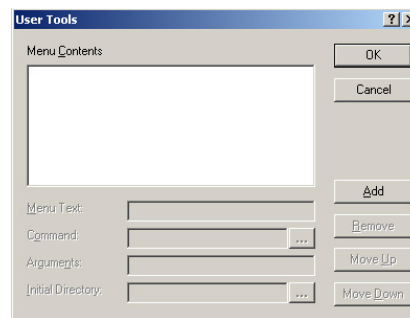
**Note:** Click on any button to get its description.

4. Drag and drop the desired button(s) from the **Buttons** group to any place on the **Toolbar**, or to the **Work Area** (in which case it will appear as a floating button).
5. Click **OK**. The PowerTerm Pro window will now display selected toolbars with the desired appearance.

**Note:** While the **Commands** properties page is displayed, you can also remove an undesired button from the toolbar by dragging and dropping it back into the dialog box.

### To add a new item to the Tools Menu:

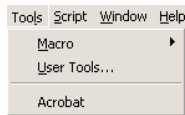
1. Select **Tools | User Tools**. The **User Tools** dialog is displayed:



2. Click **Add** and enter the **Menu Text**. The new **Tools** menu option name (e.g. Acrobat) is added to the **Menu Contents** list.
3. Designate on the **Command** text line which program and its path you wish to start when the user selects the new option.

**Note:** Click on the browse (...) button next to the **Command** text line to find the program and its path.

- Click **OK**. The new menu option appears on the **Tools** menu as displayed:



**Note:** Click **Remove** if you choose to delete a selected menu option.

## 8. PRINT SCREEN & AUTO PRINT



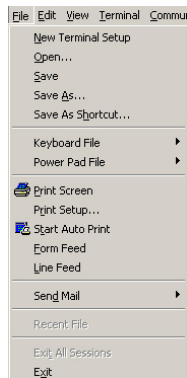
### Print Screen

Prints the selected text or the entire contents of the work area (works for all terminal types).

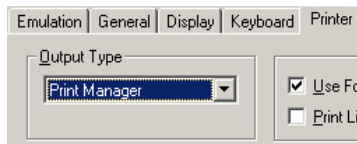


### Start/Stop Auto Print

Accumulates incoming data while it is displayed (works only with non-IBM terminal types).



If you have problems printing, check under Terminal/Setup/Printer tab to be sure that 'Output Type' is correct.



## 9. SLAVE PRINTING

Slave Printing means an automatic routing of an input data stream, such as a report, to the PC's printer port.

To use this facility, it is necessary to precede the data stream with an escape sequence, and to terminate the data stream with an escape sequence.

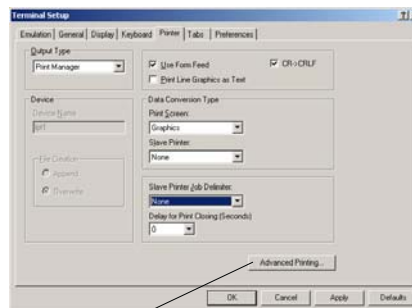
For VT and SCO:

- enable: <escape>[5]
- disable: <escape>[4]

For Wyse 50/60:

- enable: <CTRL>R
- disable: <CTRL>T

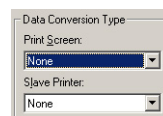
## 10. ADVANCED PRINTING



Advanced printing

**To define printing parameters:**

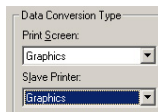
**In Text Mode:** Text mode is designated in the **Printer** tab by setting the two data conversion combo boxes (**Print Screen** and **Slave Printer**) to **None**.



Text Mode settings

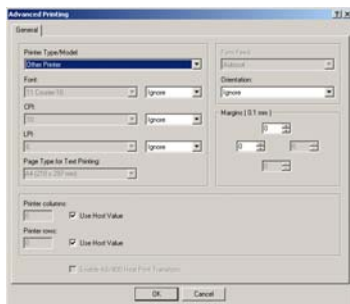
The **LPI**, **CPI**, & **Fonts** fields are functional, while the **Printer Rows** & **Printer Columns** fields are non-functional.

**In Graphics Mode:** Graphics mode is designated in the **Printer** tab by setting the two data conversion combo boxes (**Print Screen** and **Slave Printer**) to **Graphics**.



Graphics Mode settings

The **LPI**, **CPI**, & **Fonts** fields are non-functional, while the **Printer Rows** and **Printer Columns** fields are functional.



Advanced Printing dialog

### To define AS/400 Host Print Transform settings (5250 Printer):

1. Open the **Advanced Printing** dialog.
2. Select the **Enable Host Print Transform** check box.
  - Select the manufacturer printer type and model from the **Printer Type/Model** dropdown list

### Special notes about the selection areas:

#### Enable Host Printer Transform (5250 Printer only):

Enables the host to send the printer format commands specific to the emulation. If disabled, the host sends general format commands, which the emulation, in turn, translates into printer-specific commands. Host Printer Transform is relevant only for non-graphic mode.

**Printer Type/Model:** Specifies the destination printer. The default is 'HP LaserJet Series II'. If your manufacturer Printer Type/Model is not listed, choose one that is compatible.

**Font:** Specifies the name of desired font. Default is Courier-10.

## 11. SAVING AND USING SESSION SETTINGS

Once you have selected all your settings (i.e. colors, printer selections, emulation type, etc.), you can save these settings to be used later.

To do this, select one of the following **File** menu options:

- **Save** - This stores your settings to the PowerTerm default profile. These settings will be used on the initial start of PowerTerm.
- **Save As** - This allows you to create multiple setup files in cases where you have to connect to multiple hosts and are in need of different settings.
- **Save As Shortcut** - This allows you to launch a particular emulation from the desktop by clicking its icon.

### To start a session with stored parameters:

1. Start PowerTerm Pro and select **Communication | Connect**.
2. Select your **Terminal Type**.
3. Select **Terminal ID**, if necessary.
4. Select your **Session Type**.
5. Fill out the necessary parameters.
6. Click on the browse button adjacent to the **Setup File** field. PowerTerm displays the **Browse Terminal Setup** dialog with the list of .pts files contained in the PowerTerm Pro directory.
7. Double-click on the file you created. Your file now appears in the **Setup File** field.
8. Click **Save As** to save the connection's settings in the **Session List**. The **Save Session** dialog appears.
9. Enter a **Session Name** and click **OK**.
10. Double-click your session in the **Sessions List** to start the connection.

### 12. SENDING SCREEN CAPTURES BY EMAIL

PowerTerm Pro enables you to send your session settings and/or captures via email. Select **File | Send Mail** and then the desired option.

### 13. TRANSFERRING FILES

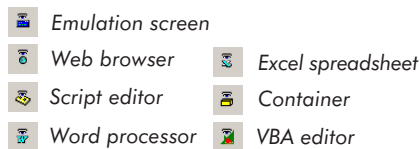
PowerTerm Pro enables you to transfer files between the PC and the host, implementing the appropriate communication protocol. PowerTerm Pro operates with both ASCII and non-ASCII files.

#### To transfer a file:

1. Connect to a host.
2. Select **Communication | Receive File** or **Send File**.
3. Fill out the necessary parameters.
4. Click **Receive File** or **Send File**, accordingly.

### 14. ACCESSING EXTERNAL APPLICATIONS

The **External Applications** toolbar enables the PowerTerm Pro user to conveniently access favorite programs. Some of the External Applications can be accessed either from within the emulation screen or as a standalone program.












**Note:** The Container incorporates OLE technology, which enables you to create objects with one application and then link or embed them in a second application. Embedded objects retain their original format and link to the application that created them.

#### To determine how to access the External Applications:

Select **Options | General Settings** and select your preference.

## 15. SCRIPT EDITOR TOOLBAR

The **Script Editor** toolbar enables the PowerTerm Pro user to work conveniently in the script editor within the emulation screen.

	Undo an unwanted action
	Redo the action that you previously erased
	Search for the desired string in the text
	Search for the next occurrence of the desired string in the text
	Search for the previous occurrence of the desired string in the text
	Toggle bookmark
	Locate the next bookmark
	Locate the previous bookmark
	Clear all bookmarks

## 16. PROVIDING SUPPORT

In order for us to provide you with the highest level of support, please supply us with:

- PowerTerm Pro version and build number
- PC operating system
- Emulation type
- Communication type

- External software being used that interfaces with PowerTerm Pro (e.g. NW SAA, MS SNA)
- Describe the problem and how to recreate it
- Attach files, if necessary (e.g. bitmaps, scripts)

### How to create a log file:

1. Open PowerTerm.
2. Perform the following:

Press key	Appears on the status bar
ctrl+shift+s	"capture.log with send"
ctrl+shift+k	"capture.log with send with keys"
ctrl+shift+t	"tcpip.log"

**Warning:** One's password is liable to be recorded in this manner.

Connect to host and arrive at the trouble spot.

*ctrl+shift+s	"capture file end"
ctrl+shift+t	"tcpip.log end"

\*mandatory

3. Open your PowerTerm directory and email us the following files:
  - *capture.log*, *tcpip.log*,
  - *setup files: ptdef.\**, *ptcomm.ini*

**Contact us:** [support@ericom.com](mailto:support@ericom.com)



**North America**  
Ericom Software Inc.  
231 Herbert Avenue, Bldg. #4  
Closter, NJ 07624 USA  
T +1 (201) 767 2210  
F +1 (201) 767 2205  
Toll-free 1 (888) 767 7876  
E-mail [info@ericom.com](mailto:info@ericom.com)

**UK & Western Europe**  
Ericom Software (UK) Ltd.  
11a Victoria Square  
Droitwich, Worcestershire  
WR9 8DE United Kingdom  
T + 44 (0) 870 2000 176  
F + 44 (0) 870 2000 179  
E-mail [info@ericom.co.uk](mailto:info@ericom.co.uk)

**International**  
Ericom Software Ltd.  
8 Hamarpeh Street  
Har Hotzvim Technology Park  
Jerusalem 91450 Israel  
T + 972 (2) 591 1700  
F + 972 (2) 571 4737  
E-mail [info@ericom.com](mailto:info@ericom.com)

QRC-061207-100

ONLINE HELP AVAILABLE

8

[WWW.ERICOM.COM](http://WWW.ERICOM.COM)