

PowerTerm® Pro Series

PowerTerm® Pro and PowerTerm® Pro Enterprise

THE NEW GENERATION OF HOST ACCESS SOLUTIONS



WebConnect

Pro Series

InterConnect

Plus/Lite

Thin Clients

Desktop
Virtualization

Green
Computing

Ericom® Software's PowerTerm® Pro Series offers a full service terminal emulation solution for the Microsoft Windows® platform. It provides seamless connectivity from PCs to a complete range of host systems and emulates the widest range of terminals available.

SEAMLESS CONNECTIVITY FROM PC TO HOST

PowerTerm Pro maximizes enterprise-wide productivity by enabling reliable access to accounting, inventory management, transaction processing and other mission critical legacy applications more effectively and efficiently than ever before.

SUPPORTING THE LARGEST RANGE OF TERMINALS

PowerTerm Pro supports a full line of IBM (3270 and 5250 both display and printer), Digital, ANSI, Data General, Wyse, Televideo, Siemens, Tandem, HP, and other terminal emulation types.

...A VARIETY OF HOSTS

PowerTerm Pro facilitates connection to applications running on a variety of hosts including IBM Mainframe, IBM AS/400, Unix, OpenVMS, and Data General, over network, modem or direct serial link from any PC.

PROMINENT FEATURES

PowerTerm Pro has all the traditional features of terminal emulation products plus more:

Compatible with Windows

- PowerTerm Pro utilizes a Windows compatible GUI. It automatically determines whether Word and/or Excel are installed on the user's PC, and allows use of these programs from within the PowerTerm Pro work environment.

Access to E-mail and the Web

- PowerTerm Pro related files including data-files, screen captures and capture log files can be automatically created and sent, in one easy step, to Ericom's Technical Support desk via the user's email when assistance is required. Additionally, PowerTerm Pro provides the convenience of full Web browsing compatibility without exiting the PowerTerm Pro work environment.

Additional features include customizable and dockable menu and toolbars, customizable function keys, Power Script Language, script editor (advanced editing capabilities), multi-session capabilities, scalable and selectable fonts, intelligent copy & paste, FTP client, Intellimouse support and advanced printing. A full list of features can be found on the reverse side.

INTRODUCING POWERTERM PRO ENTERPRISE

PowerTerm Pro Enterprise provides the same advanced enterprise wide connectivity as PowerTerm Pro with the following added features:

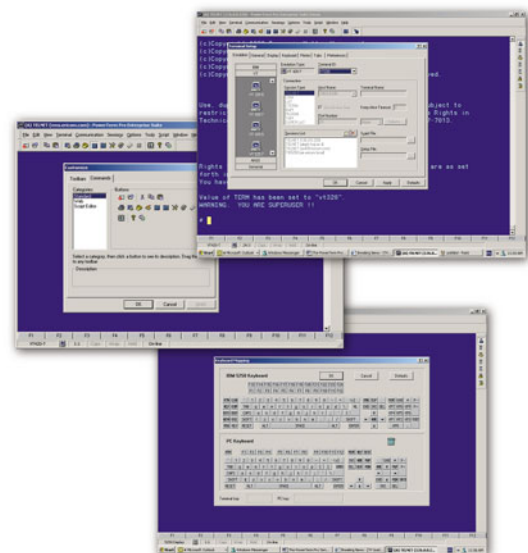
- Microsoft® Visual Basic® for Applications (VBA).**
PowerTerm Pro Enterprise incorporates VBA as the basis for its scripting language, enhancing the functionality of host data within Office applications including Word, Excel and PowerPoint.
VBA is a standard tool that enables users to link information across the organization, making it customizable and compatible with other applications and data throughout the enterprise. It creates an entire work environment for optimizing user productivity.
- Built-in Security from RSA Security, Inc.**
PowerTerm Pro Enterprise incorporates the Internet-standard SSH and SSL security encryption protocols to ensure secure transmission of data throughout the enterprise, as well as SFTP for performing file transfers between PC and host.

QUICK INSTALLATION

PowerTerm Pro allows quick and simple installation onto any PC and is available for network installation and in Terminal Server Edition (TSE).

THE POWERTERM PRO SERIES

The PowerTerm Pro Series offers PowerTerm Pro Suite and PowerTerm Pro/Enterprise Suite, PowerTerm Pro for UNIX and PowerTerm Pro/Enterprise for UNIX.



POWERTERM PRO SERIES TECHNICAL SPECIFICATIONS

PLATFORMS SUPPORTED	Windows XP, Windows Vista, Windows 7, Windows Server 2003/2008/2008 R2
HOSTS SUPPORTED	IBM Mainframe, IBM AS/400, Unix, Linux, OpenVMS, Tandem (NSK), HP-3000, SCO, Data General
TERMINALS EMULATED	IBM: 3270 3278-3 (32x80), 3278-4 (43x80), 3278-5 (27x132), 3278-2-E (24x80), 3278-3-E (32x80), 3278-4-E (43x80), 3278-5-E (27x132), 3279-2-E (24x80), 3279-3-E (32x80), 3279-4-E (43x80), 3279-5-E (27x132), IBM 5250 (TN5250 with device name support): 3179-2 (24-80), 3477 - FC (27x132) Digital: VT52, VT100, VT220, VT320, VT420, VT510, VT525 ANSI: SCO-ANSI, BBS-ANSI, AT386 Other: Other: HP-700/92, HP-700/96, IBM 3151, IBM 3151, Wyse (50/60/370), Data General D-412, Televideo TVI 910+/925/950/955, Tandem 6530, AlXterm, HZ 1500, ADDS VP a2
SUPPORTED INTERFACES	Ethernet, Token Ring, Serial Ports
COMMUNICATION MODES	TN3270/TN3270E, TN5250/TN5250E, Novell Netware for SAA, APPC (NS-Router for 5250), Telnet, serial, modem, direct COM port, Pathworks LAT, Super LAT, DECnet, PPP/SLIP, Microsoft SNA server, TELNET, TAPI
FILE TRANSFER	IND\$FILE, Kermit (including get command), X-Modem, Y-Modem, Z-Modem, transfer to/from clipboard, remote file browsing, ASCII, AS/400 file transfer, FTP Client
VISUAL BASIC® FOR APPLICATIONS 6*	Microsoft Visual Basic for Applications is the premier development technology for rapidly customizing packaged applications and integrating them with existing data and systems. VBA offers a sophisticated set of programming tools based on Microsoft Visual Basic, the world's most popular rapid application development system that developers use to harness the power of packaged applications.
PROGRAMMING SUPPORT	OLE Automation
SECURITY FEATURES*	SSL, SSH, SFTP
PRINTING SUPPORT	Auto print mode, print screen, slave printing, IBM 3287 printer, IBM 3812 printer, SNA LUI and LU3 support, advanced printing, host print transform, override host settings
GUI FEATURES	Graphical drag & drop keyboard mapping, graphical color selection, customizable function keys, scalable fonts, status line, menu and tool bar, 80/132 column width, variable lines per page, double width/height characters, blink, underline, reverse and much more
LANGUAGE SUPPORT	Over 30 languages including English, German, French, Spanish, Italian, Turkish, Greek, Dutch, Polish, Hungarian, Swedish, Czech, Danish, Norwegian, Finnish, Portuguese, Russian and more.
OTHER FEATURES	Terminal Server Edition (TSE), powerful scripting language, LK450 keyboard support, modem dialing, save-lock-state, multi-sessions, Intellimouse support, macros, script recorder, advanced script editor, history scroll bar for session review, intelligent copy & paste of blocks/lines/words, keyboard mapping, keyboard property page, floating programmable PowerPad keypad, programmable hotspots, automated login, file operations, execute both host and PC programs, DDE Client & Server, WinHLLAPI, HLLAPI, EHLLAPI, and more.

*Available only in PowerTerm Pro Enterprise

ERICOM – ACCESS DONE RIGHT

Ericom® Software is a leading global provider of Application Access and Virtualization Solutions (VDI). Since 1993, Ericom has been helping users access business-critical applications running on a broad range of Microsoft® Windows® Terminal Servers, Virtual Desktops (VDI), Blade PCs, legacy hosts, and other systems. Ericom provides concrete business value by helping organizations realize the benefits of their IT investments. With offices in the United States, United Kingdom, EMEA, India and China, Ericom also has an extensive network of distributors and partners throughout North America, Europe, and Asia. Our expanding customer base is more than 30 thousand strong, with over 7 million installations.



North America

Ericom Software Inc.
231 Herbert Avenue
Closter, NJ 07624 USA
T +1 (201) 767 2210
F +1 (201) 767 2205
Toll-free 1 (888) 769 7876
E-mail info@ericom.com

UK & Western Europe

Ericom Software (UK) Ltd.
11a Victoria Square
Droitwich, Worcestershire
WR9 8DE United Kingdom
T + 44 (0) 845 644 3597
F + 44 (0) 845 644 3598
E-mail info@ericom.co.uk

International

Ericom Software Ltd.
8 Hamarpeh Street
Har Hotzvim Technology Park
Jerusalem 91450 Israel
T + 972 (2) 591 1700
F + 972 (2) 571 4737
E-mail info@ericom.com

Copyright © 1999-2011 Ericom Software Ltd. Ericom and PowerTerm are registered trademarks of Ericom Software Ltd. Other company and brand, products and service names are trademarks or registered trademarks of their respective holders.